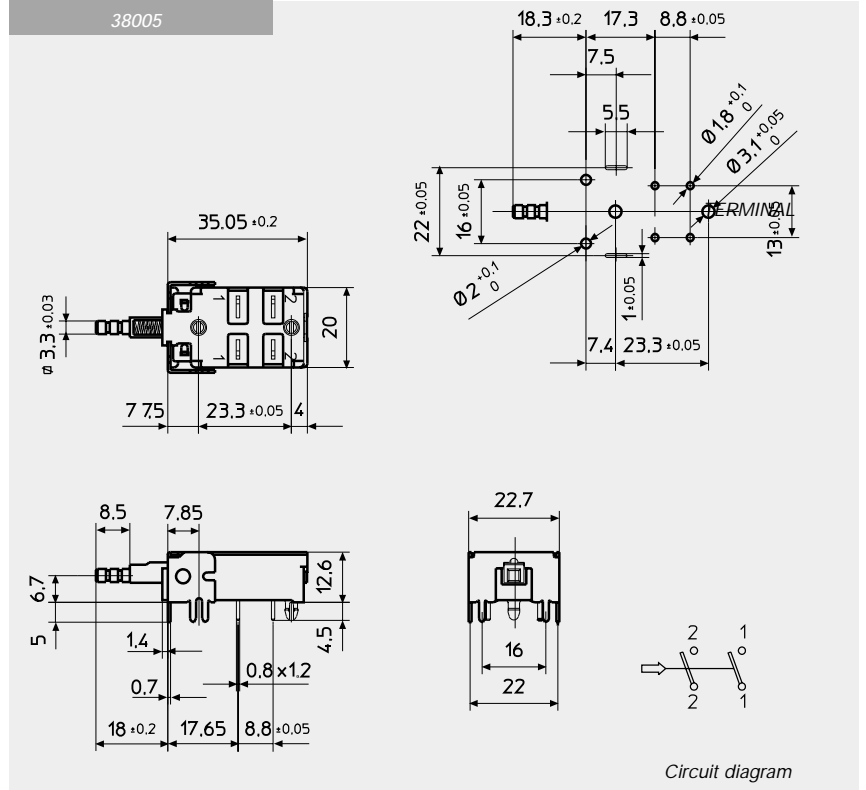
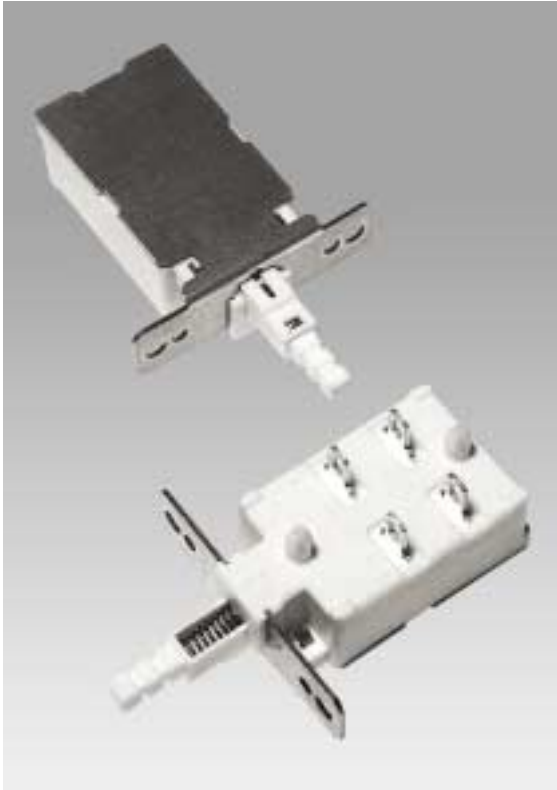




INTERRUTTORI DI RETE
MAINS SWITCHES
INTERRUPTEURS SECTEUR
NETZSCHALTER

TIPO
 TYPE
 TYPE
 TYP

MG



A SALDARE

TO SOLDER

A SOUDER

MIT LÖTANSCHLÜSSEN



Corpo isolante Bianco	<i>Insulating body White</i>	Corps isolant Blanc	<i>Isolierkörper Weiss</i>	PBT UL 94V0
Astina	<i>Shaft</i>	Coulisseau	<i>Schaft</i>	
Contatti	<i>Contacts</i>	Contacts	<i>Kontakte</i>	Cu + Ag Ni 90/10
Forza di azionamento	<i>Operating force</i>	Force d'actionnement	<i>Betätigungskraft</i>	3/6 N
Corsa del tasto	<i>Knob travel</i>	Course du bouton	<i>Schalhub</i>	2,5 ÷ 3,5 mm.
Dati di targa IEC 1058/1	<i>Nominal data IEC 1058/1</i>	Valeurs nominales IEC 1058/1	<i>Nennschaltlast nach IEC 1058/1</i>	8 /128A 250V AC
Cicli	<i>Cycles</i>	Cycles	<i>Zyklen</i>	10.000
Frequenza	<i>Frequency</i>	Frequence	<i>Frequenz</i>	50 Hz
Resistenza alle correnti sup.	<i>Tracking resistance</i>	Résistance courant fuite	<i>Kriechstromfestigkeit</i>	PTI 175V
Categoria	<i>Category</i>	Categorie	<i>Kategorie</i>	D
Dati di targa UL 1054	<i>Nominal data UL 1054</i>	Valeurs nominales UL 1054	<i>Nennschaltlast nach UL 1054</i>	TV8 250V AC
Cicli	<i>Cycles</i>	Cycles	<i>Zyklen</i>	25.000
Frequenza	<i>Frequency</i>	Frequence	<i>Frequenz</i>	50 Hz
Temperatura	<i>Temperature</i>	Température	<i>Temperaturbereich</i>	0 /+55°C

This main switch complies with the requirements of standard IEC65 6thed. par. 7.2/14.6